

BLC 70 (T)-Series

Stainless Steel – Centrifugal Pump

GIG

SPECIFICATION

- Max. Working Pressure : 8 Bar (0.8 MPa)
- Max. Environmental Temp. : 50 °C
- Max Section : 9 m



Cooling

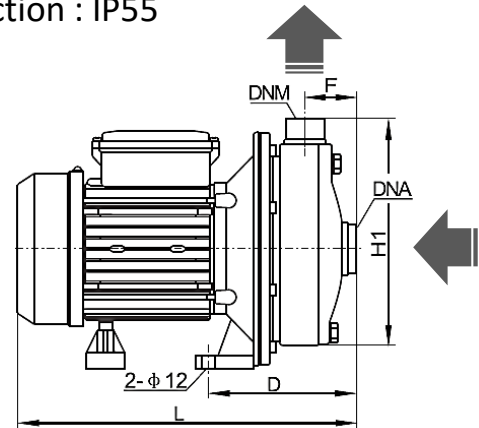
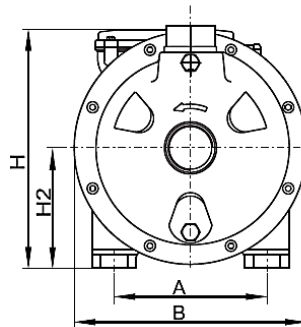


Industrial



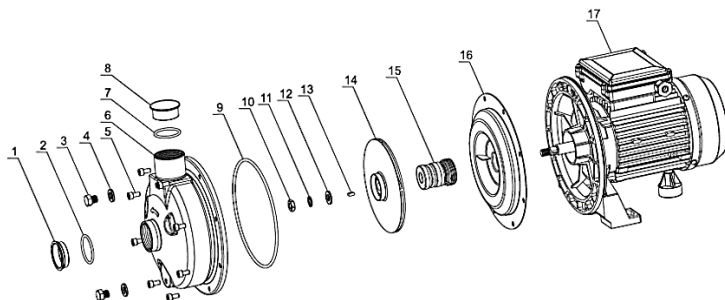
Drinking Water

- Thermal Protector : Single Phase
- Insulation : Class F
- Protection : IP55



Overall Dimension

Model	Shape Size (mm.)							
	A	B	D	F	L	H	H1	H2
BLC70/055 (T)	140	213	138	49	315	218	232	110
BLC70/075 (T)	140	213	138	49	315	218	232	110
BLC70/100 (T)	140	213	138	49	315	218	232	110
BLC120/075 (T)	140	213	138	49	315	218	232	110
BLC120/110 (T)	140	213	138	49	337	320	232	110
BLC120/150 (T)	150	234	240	46	373	255	240	120
BLC120/185 (T)	150	234	240	46	373	255	240	120



- 1. Dust Cap
- 2. O-Ring
- 3. Plug
- 4. Washer
- 5. Inside Hexagonal Bolt
- 6. Pump Housing Component
- 7. O-Ring
- 8. Dust Cap
- 9. O-Ring
- 10. Hexagonal Nut
- 11. Spring Washer
- 12. Washer
- 13. Key
- 14. Impeller
- 15. Mechanical Seal
- 16. Pump Cover
- 17. Motor



BLC 70 (T)-Series

Stainless Steel – Centrifugal Pump

GIG

Technical Parameter list

	Model	Power-P ₂		Amps		Rate Head	Rate Flow	Curve	DNA	DNM
		kW	220V/50Hz	380V/50Hz	H _n (m)	Q _n (m ³ /h)				
1	BLC70/055 (T)	0.55	3.8	1.4	14	4.2	1	1 ¼"	1"	
2	BLC70/075 (T)	0.75	5.2	1.8	19	4.2	3	1 ¼"	1"	
3	BLC70/100 (T)	1.00	6.2	2.4	22	4.2	4	1 ¼"	1"	
4	BLC120/075 (T)	0.75	5.2	1.8	14	7.2	2	1 ¼"	1"	
5	BLC120/110 (T)	1.10	7.0	2.6	17	7.2	5	1 ¼"	1"	
6	BLC120/150 (T)	1.50	9.2	3.5	22	7.2	6	1 ¼"	1"	
7	BLC120/185 (T)	1.85	13	4.1	25	7.2	7	1 ¼"	1"	

