

CJE(S)X (M)-Series

Self Priming Jet Pump – Stainless Steel

GIG

SPECIFICATION

- Max. Working Pressure : 8 Bar (0.8 MPa)
- Max. Environmental Temp. : 50 °C
- Max Suction : 9 m.



Cooling

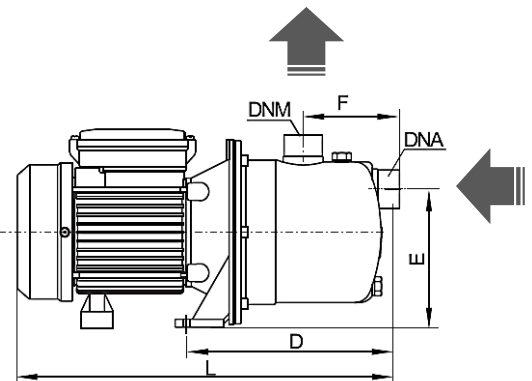
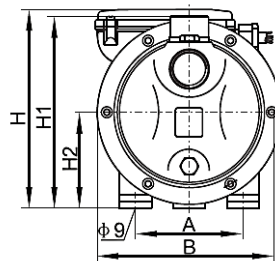


Industrial

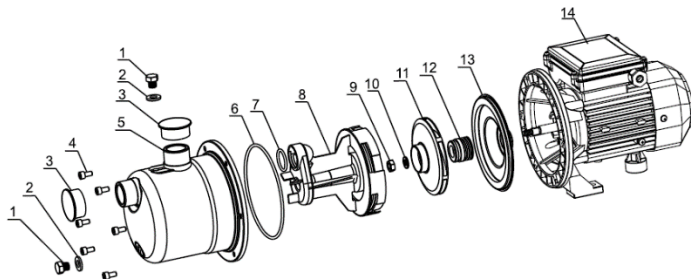


Floors

- Thermal Protector : Single Phase
- Insulation : Class F
- Protection : IP55



Model	Shape Size (mm.)								
	A	B	D	E	F	L	H1	H2	H3
CJESX(M)-5	100	172	198	128	90	354	184	178	88
CJESX(M)-6	100	172	198	128	90	354	184	178	88
CJESX(M)-8	100	172	198	128	90	354	184	178	88
CJEX(M)-080	120	207	225	156	100	405	214	210	106
CJEX(M)-100	120	207	225	156	100	405	214	210	106
CJEX(M)-120	120	207	225	156	100	405	214	210	106
CJEX(M)-150	140	207	225	156	100	405	214	210	106



- 1.Plug
- 2.Washer
- 3.Dust cap
- 4.Inside Hexagonal bolt
- 5.Pump housing component
6. O-ring
- 7.O-ring
- 8.Ejector
- 9.Hexagonal Nut
- 10.Spring washer
- 11.Impeller
- 12.Mechanical seal
- 13.Pump cover
- 14.Motor



CJE(S)X (M)-Series

Self Priming Jet Pump – Stainless Steel

GIG

Technical Parameter list

	Model	Power-P ₂ kw	Amps		Capacitor μF/450V	Rate Head H _n (m)	Rate Flow Q _n (m ³ /h)	Curve	DNA	DNM
			220V/50Hz	380V/50Hz						
1	CJESX(M)-5	0.37	2.4	1.0	10	20	1.5	1	1"	1"
2	CJESX(M)-6	0.37	2.4	1.0	10	20	1.5	1	1"	1"
3	CJESX(M)-8	0.55	3.8	1.4	15	25	1.5	2	1"	1"
4	CJEX(M)-080	0.75	5.2	1.8	20	23	3.0	3	1 ¼"	1"
5	CJEX(M)-100	1.0	6.2	2.4	25	28	3.0	4	1 ¼"	1"
6	CJEX(M)-120	1.0	6.2	2.4	25	28	3.0	4	1 ¼"	1"
7	CJEX(M)-150	1.3	8.4	3.1	40	37	3.0	5	1 ¼"	1"

