

BLC 200(T)-Series

Stainless Steel – Centrifugal Pump

GIG

SPECIFICATION

- Max. Working Pressure : 8 Bar (0.8 MPa)
- Max. Environmental Temp. : 50 °C
- Max Suction : 9 m.



Cooling

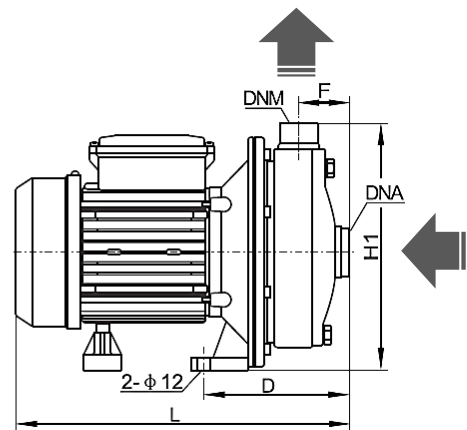
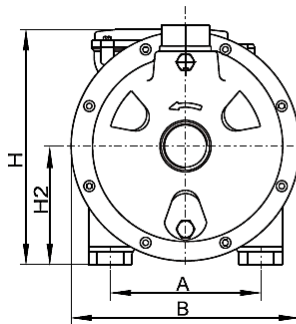


Industrial



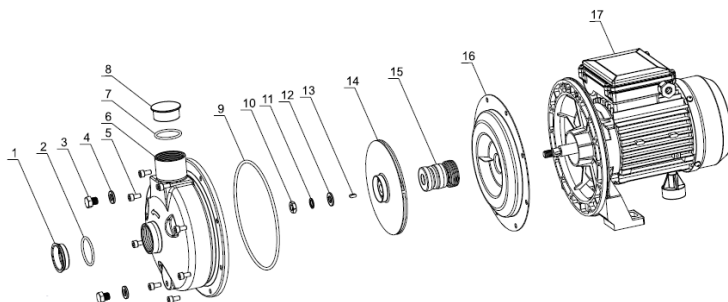
Drinking Water

- Thermal Protector : Single Phase
- Insulation : Class F
- Protection : IP55



Shape Size (mm.)

Model	A	B	D	F	L	H	H1	H2
BLC200/110 (T)	140	213	138	49	337	230	222	110
BLC200/150 (T)	140	213	138	49	366	255	222	110
BLC200/150-B (T)	140	213	138	49	339	255	222	110
BLC200/185 (T)	140	213	138	49	354	255	222	110
BLC200/185-B (T)	140	213	138	49	366	255	222	110
BLC370/185 (T)	140	213	138	49	386	252	222	110



1. Dust Cap
2. O-Ring
3. Plug
4. Washer
5. Inside Hexagonal Bolt
6. Pump Housing Component
7. O-Ring
8. Dust Cap
9. O-Ring
10. Hexagonal Nut
11. Spring Washer
12. Washer
13. Key
14. Impeller
15. Mechanical Seal
16. Pump Cover
17. Motor

2. O-Ring
4. Washer
6. Pump Housing Component
8. Dust Cap
10. Hexagonal Nut
12. Washer
14. Impeller
16. Pump Cover



BLC 200(T)-Series

Stainless Steel – Centrifugal Pump

GIG

Technical Parameter list

Model	Power-P ₂		Amps		Rate Head	Rate Flow	Curve	DNA	DNM
	kw	220V/50Hz	380V/50Hz	H _n (m)	Q _n (m ³ /h)				
1 BLC200/110 (T)	1.10	7.0	2.6	15	9	1	1 ½"	1"	
2 BLC200/150 (T)	1.50	9.2	3.5	20	10	3	1 ½"	1"	
3 BLC200/150-B (T)	1.50	9.2	3.5	20	10	3	1 ½"	1"	
4 BLC200/185 (T)	1.85	13	4.1	21	12	4	1 ½"	1"	
5 BLC200/185-B (T)	1.85	13	4.1	21	12	4	1 ½"	1"	
6 BLC370/185 (T)	1.85	13	4.1	14	22	2	2"	1 ½"	

