

CV2 - Series

Stainless Steel – Vertical Multistage Centrifugal Pump

GIG

SPECIFICATION

- Max. Environmental Temp. : 50 °C
- Max. Pressure : 25 Bar (2.5 MPa)
- Max. Efficiency : 45%



- Thermal Protector : Single Phase
- Voltage (Frequency) : 220V / 380V (50Hz)
- Insulation : Class F
- Protection : IP55
- Stainless Steel Middle Section
- Stainless Steel Impeller



Cooling



Industrial



Floors

| Model | Power-P ₂ | Rate Head | | Rate Flow | R.P.M (r/min) |
|------------|----------------------|----------------------|--------------------|--------------------------------------|------------------|
| | (kW) | H _{max} (m) | H _n (m) | Q _n (m ³ /hrs) | |
| CV2-2 (T) | 0.37 | 18 | 14 | 2.0 | 2900 |
| CV2-3 (T) | 0.37 | 25 | 20 | 2.0 | 2900 |
| CV2-4 (T) | 0.55 | 35 | 28 | 2.0 | 2900 |
| CV2-5 (T) | 0.55 | 45 | 37 | 2.0 | 2900 |
| CV2-6 (T) | 0.75 | 53 | 44 | 2.0 | 2900 |
| CV2-7 (T) | 0.75 | 61 | 52 | 2.0 | 2900 |
| CV2-9 (T) | 1.10 | 79 | 63 | 2.0 | 2900 |
| CV2-11 (T) | 1.10 | 97 | 74 | 2.0 | 2900 |
| CV2-13 (T) | 1.50 | 117 | 90 | 2.0 | 2900 |
| CV2-15 (T) | 1.50 | 132 | 105 | 2.0 | 2900 |
| CV2-18 (T) | 2.20 | 158 | 125 | 2.0 | 2900 |
| CV2-22 (T) | 2.20 | 190 | 152 | 2.0 | 2900 |
| CV2-26 (T) | 3.00 | 220 | 180 | 2.0 | 2900 |

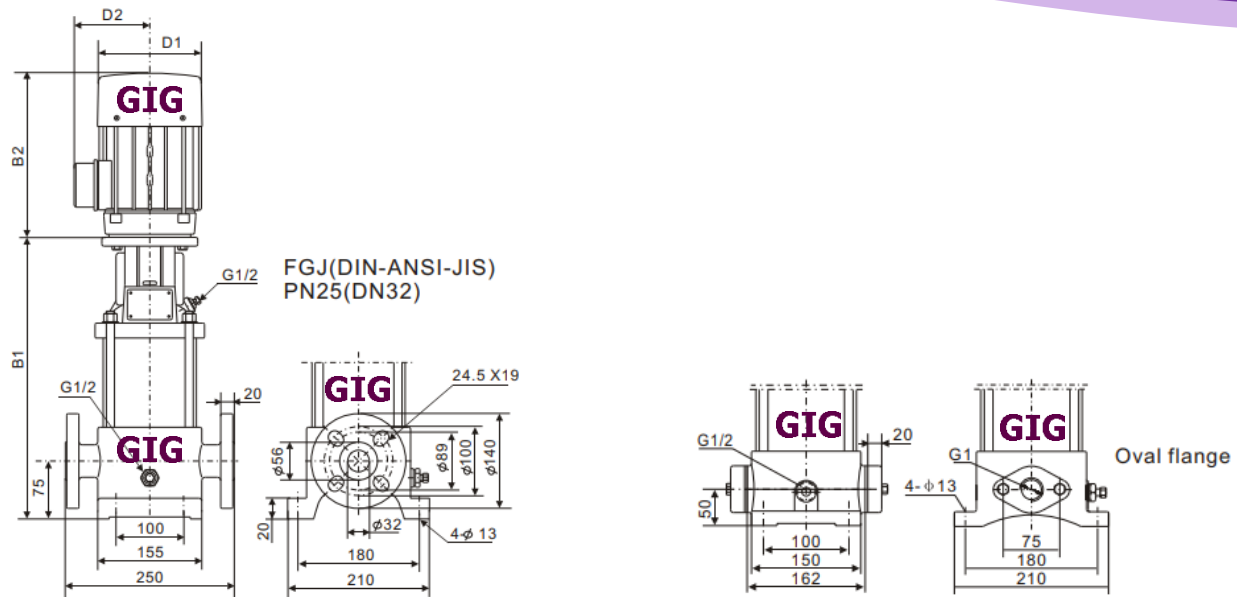
T = Voltage (Frequency) : 220V (50Hz)

CV2 - Series

Stainless Steel – Vertical Multistage Centrifugal Pump

GIG

Overall Dimension



| Model | Dimension (mm) | | | | | Weight (kg) |
|------------|----------------|---------|---------|-----|-----|-------------|
| | B1 | B2 | B1+B2 | D1 | D2 | |
| CV2-2 (T) | 262 | 205 | 467 | 133 | 102 | 22 |
| CV2-3 (T) | 280 | 205 | 485 | 133 | 102 | 22 |
| CV2-4 (T) | 298 | 205 | 503 | 133 | 102 | 25 |
| CV2-5 (T) | 316 | 205 | 521 | 133 | 102 | 25 |
| CV2-6 (T) | 334 | 205 | 539 | 133 | 102 | 27 |
| CV2-7 (T) | 352 | 241 | 557 | 133 | 102 | 27 |
| CV2-9 (T) | 394 | 241 | 635 | 154 | 111 | 29 |
| CV2-11 (T) | 430 | 241/293 | 671 | 154 | 111 | 29 |
| CV2-13 (T) | 466 | 241/293 | 707/759 | 154 | 111 | 32 |
| CV2-15 (T) | 502 | 241/293 | 743/795 | 154 | 111 | 32 |
| CV2-18 (T) | 558 | 275/293 | 833/851 | 177 | 116 | 38 |
| CV2-22 (T) | 630 | 275/293 | 905/923 | 177 | 116 | 43 |
| CV2-26 (T) | 702 | 293 | 977 | 177 | 116 | 48 |

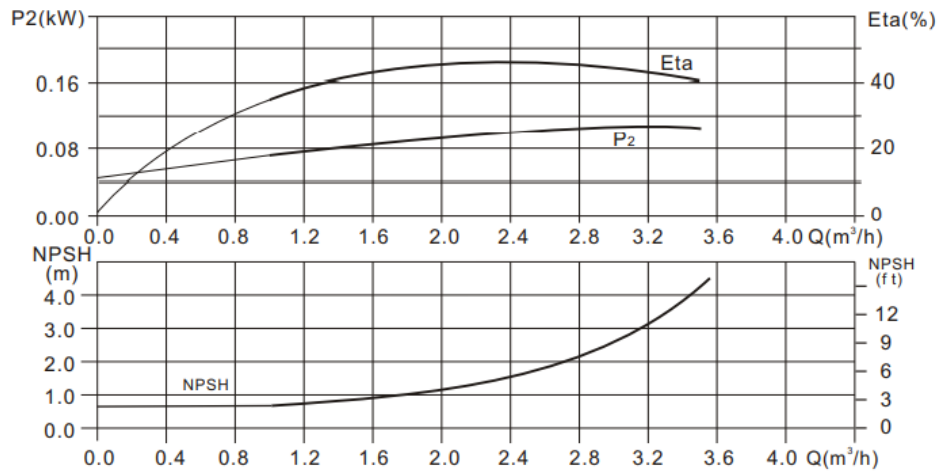
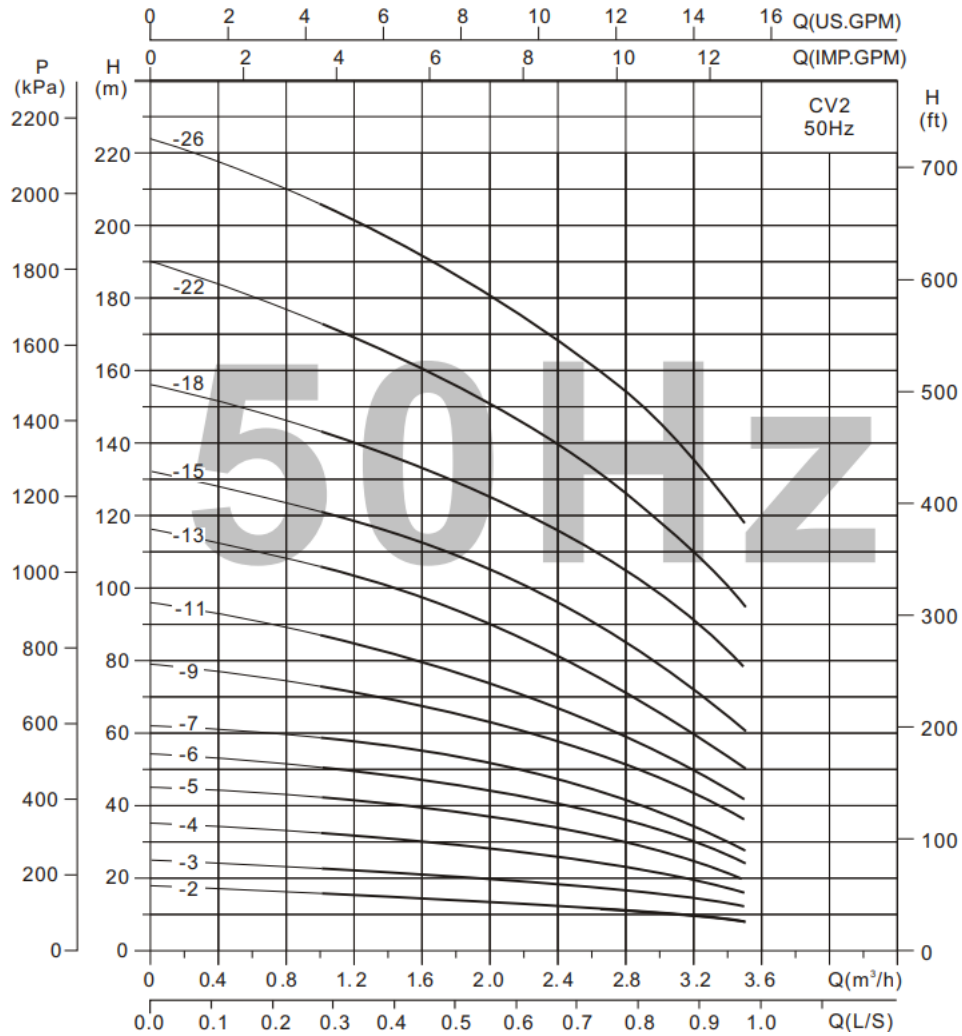
Oval flange is not available for CV2-15~CV2-26

CV2 - Series

Stainless Steel – Vertical Multistage Centrifugal Pump

GIG

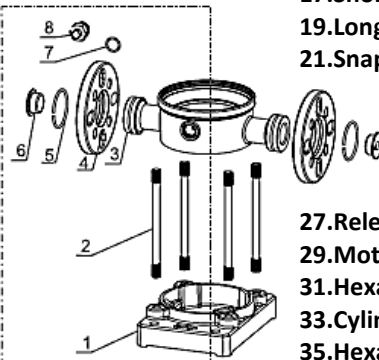
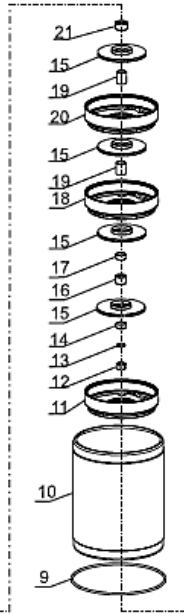
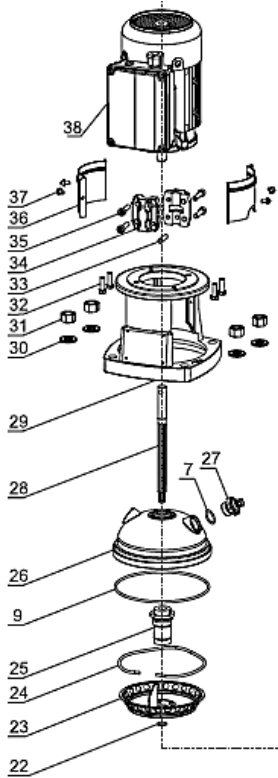
Performance Curve



CV2 - Series

Stainless Steel – Vertical Multistage Centrifugal Pump

GIG



- 1.Base
- 2.Two-Head Bolt
- 3.Pump Body
- 4.Flange
- 5.Flange Ring
- 6.Dust Cap
- 7.O-Ring
- 8.Drain Valve Assembly
- 9.O-Ring
- 10.Housing
- 11.Inlet Section
- 12.Locked Nut
- 13.Spring Washer
- 14.Impeller Fix Ring
- 15.Impeller
- 16.Bearing Sleeve
- 17.Short Sleeve
- 18.Diffusor With Bearing
- 19.Long Sleeve
- 20.Diffusor
- 21.Snap-Ring Seat
- 22.Snap-Ring
- 23.Outlet Section
- 24.Elastic Ring
- 25.Mechanical Seal
- 26.Pump Cover
- 27.Release Valve
- 28.Pump Shaft
- 29.Motor Base
- 30.Washer
- 31.Hexagonal Nut
- 32.Hexagonal Bolt
- 33.Cylindrical Pin
- 34.Coupling
- 35.Hexagon Socket Head Cap Screw and Wash Assemblies
- 36.Protective Cover
- 37.Cross Recessed Pan Head Screw and Wash Assemblies
- 38. O-Ring

Type Keys

