

CV4 - Series

Stainless Steel – Vertical Multistage Centrifugal Pump

GIG

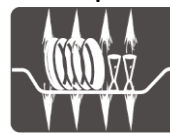
SPECIFICATION

- Max. Environmental Temp. : 50 °C
- Max. Pressure : 25 Bar (2.5 MPa)
- Max. Efficiency : 58%

- Thermal Protector : Single Phase
- Voltage (Frequency) : 220V / 380 (50Hz)
- Insulation : Class F
- Protection : IP55
- Stainless Steel Middle Section
- Stainless Steel Impeller



Cooling



Industrial



Floors

Model	Power-P ₂	Rate Head	Rate Flow
	(kW)	H _n (m)	Q _n (m ³ /hrs)
CV4-2 (T)	0.37	16	4.0
CV4-3 (T)	0.55	24	4.0
CV4-4 (T)	0.75	31	4.0
CV4-5 (T)	1.10	40	4.0
CV4-6 (T)	1.10	49	4.0
CV4-7 (T)	1.50	59	4.0
CV4-8 (T)	1.50	65	4.0
CV4-10 (T)	2.20	84	4.0
CV4-12 (T)	2.20	98	4.0
CV4-14 (T)	3.00	118	4.0
CV4-16 (T)	3.00	134	4.0
CV4-19 (T)	4.00	115	4.0
CV4-22 (T)	4.00	182	4.0

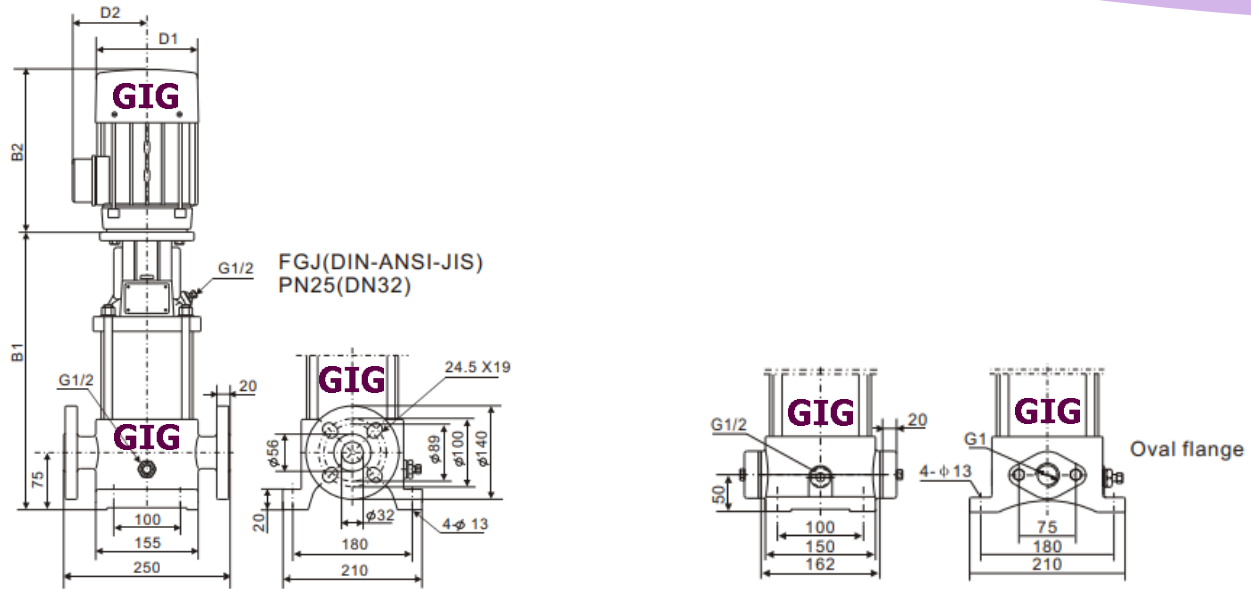
T = Voltage (Frequency) : 220V (50Hz)

CV4 - Series

Stainless Steel – Vertical Multistage Centrifugal Pump

GIG

Overall Dimension



Model	Dimension (mm)					Weight (kg)
	B1	B2	B1+B2	D1	D2	
CV4-2 (T)	262	205	467	133	102	25
CV4-3 (T)	280	205	485	133	102	25
CV4-4 (T)	299	205	504	133	102	26
CV4-5 (T)	322	241	563	154	111	26
CV4-6 (T)	340	241	581	154	111	28
CV4-7 (T)	358	241/293	599/651	154	111	33
CV4-8 (T)	376	241/293	617/669	154	111	33
CV4-10 (T)	420	275/293	695/713	177	116	35
CV4-12 (T)	456	275/293	731/749	177	116	35
CV4-14 (T)	492	293	785	177	116	38
CV4-16 (T)	528	293	821	197	116	38
CV4-19 (T)	602	305	907	197	148	48
CV4-22 (T)	656	305	961	197	148	53

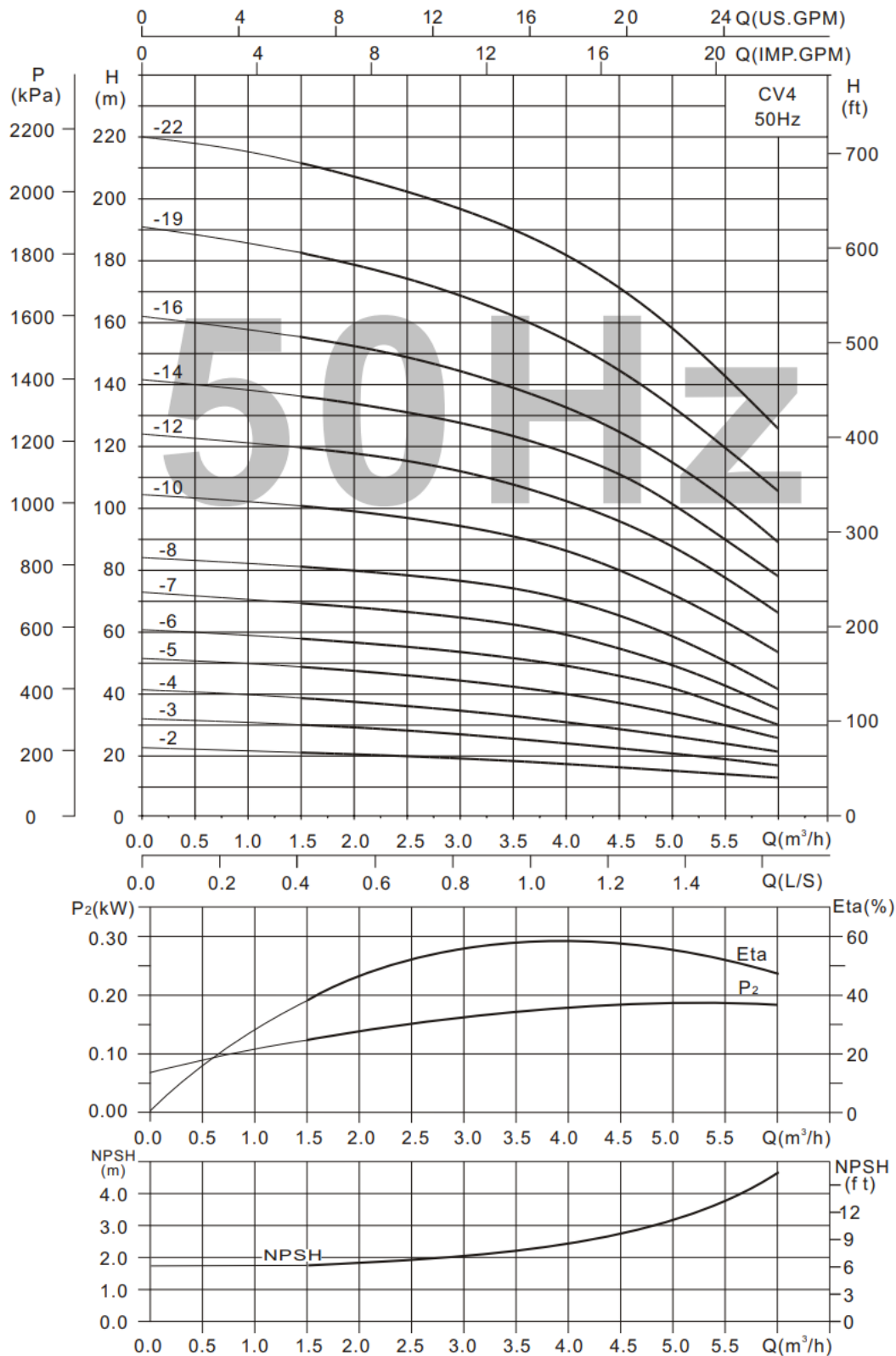
Oval flange is not available for CV4-16~CV4-22

CV4 - Series

Stainless Steel – Vertical Multistage Centrifugal Pump

GIG

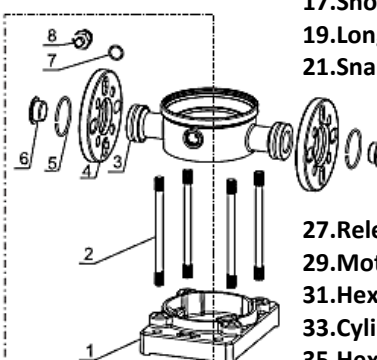
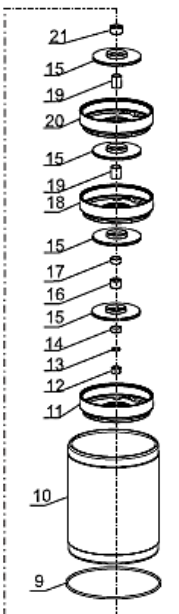
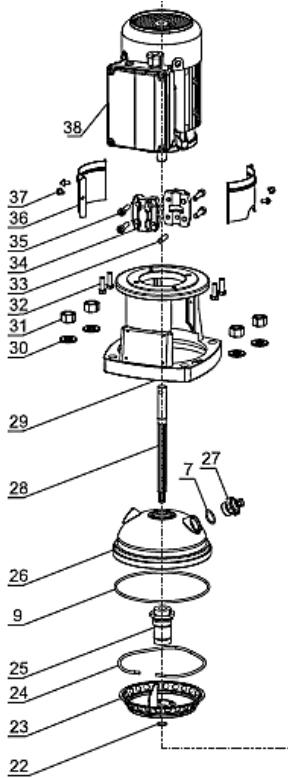
Performance Curve



CV4 - Series

Stainless Steel – Vertical Multistage Centrifugal Pump

GIG



- 1.Base
- 2.Two-Head Bolt
- 3.Pump Body
- 4.Flange
- 5.Flange Ring
- 6.Dust Cap
- 7.O-Ring
- 8.Drain Valve Assembly
- 9.O-Ring
- 10.Housing
- 11.Inlet Section
- 12.Locked Nut
- 13.Spring Washer
- 14.Impeller Fix Ring
- 15.Impeller
- 16.Bearing Sleeve
- 17.Short Sleeve
- 18.Diffusor With Bearing
- 19.Long Sleeve
- 20.Diffusor
- 21.Snap-Ring Seat
- 22.Snap-Ring
- 23.Outlet Section
- 24.Elastic Ring
- 25.Mechanical Seal
- 26.Pump Cover
- 27.Release Valve
- 28.Pump Shaft
- 29.Motor Base
- 30.Washer
- 31.Hexagonal Nut
- 32.Hexagonal Bolt
- 33.Cylindrical Pin
- 34.Coupling
- 35.Hexagon Socket Head Cap Screw and Wash Assemblies
- 36.Protective Cover
- 37.Cross Recessed Pan Head Screw and Wash Assemblies
- 38. O-Ring

Type Keys

