

BLC 50(T)-Series

Stainless Steel – Centrifugal Pump

GIG

SPECIFICATION

- Max. Working Pressure : 8 Bar (0.8 MPa)
- Max. Environmental Temp. : 50 °C
- Max Suction : 9 m.



Cooling

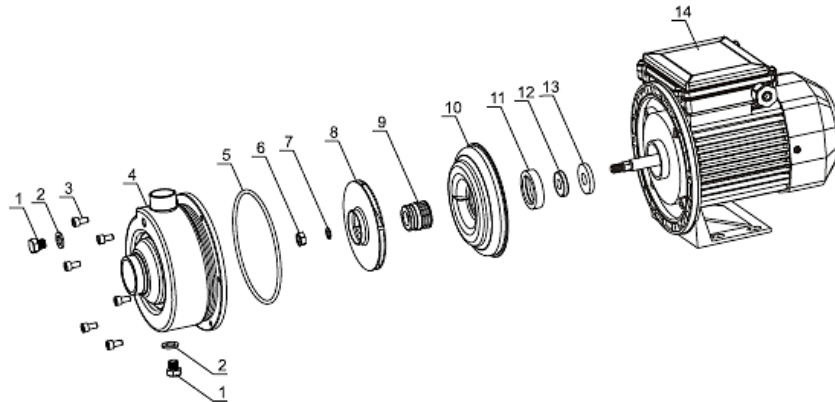
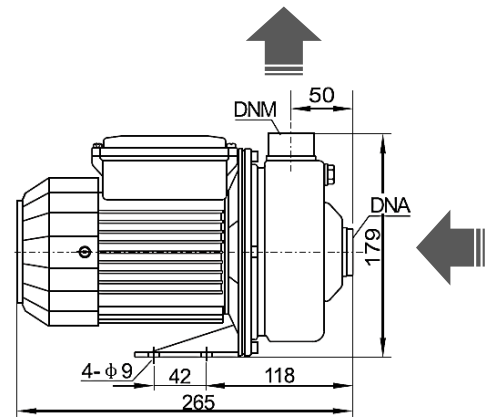
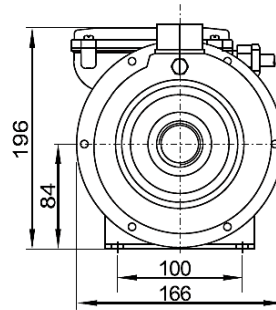


Industrial



Drinking Water

- Thermal Protector : Single Phase
- Insulation : Class F
- Protection : IP55



- 1.Plug
- 3.Inside Hexagonal Bolt
- 5.O-Ring
- 7.Spring Washer
- 9.Mechanical Seal
- 11.Flanqe Cover Pad
- 13.Oil Seal

- 2.Washer
- 4.Pump Housing Component
- 6.Hexagonal Nut
- 8.Impeller
- 10.Pump Cover
- 12.Shaft Seal Ring
- 14.Motor

BLC 50(T)-Series

Stainless Steel – Centrifugal Pump

GIG

Technical Parameter list

Model	Power-P ₂ kW	Amps		Rate Head H _n (m)	Rate Flow Q _n (m ³ /h)	DNA	DNM	Weight (kg)
		220V/50Hz	380V/50Hz					
BLC50/025(T)	0.25	2.0	0.7	9	3.0	1 ¼"	1"	6.3
BLC50/037(T)	0.37	2.4	1.0	11	3.0	1 ¼"	1"	7.0
BLC70/037(T)	0.37	2.4	1.0	13	4.2	1 ¼"	1"	7.5
BLC100/055(T)	0.55	3.8	1.4	12	5.0	1 ¼"	1"	8.0

Performance Curve

