

CV10 - Series

Stainless Steel – Vertical Multistage Centrifugal Pump

GIG

SPECIFICATION

- Max. Environmental Temp. : 50 °C
- Max. Pressure : 22 Bar (2.2 MPa)
- Max. Efficiency : 66%



- Thermal Protector : Single Phase
- Voltage (Frequency) : 220V / 380 (50Hz)
- Insulation : Class F
- Protection : IP55
- Stainless Steel Middle Section
- Stainless Steel Impeller



Cooling



Industrial



Floors

Model	Power-P ₂	Rate Head	Rate Flow
	(kW)	H _n (m)	Q _n (m ³ /hrs)
CV10-2 (T)	0.75	16	10.0
CV10-4 (T)	1.50	32	10.0
CV10-6 (T)	2.20	46	10.0
CV10-7 (T)	3.00	54	10.0
CV10-8 (T)	3.00	62	10.0
CV10-9 (T)	3.00	71	10.0
CV10-10 (T)	4.00	81	10.0
CV10-12 (T)	4.00	95	10.0
CV10-14 (T)	5.50	110	10.0
CV10-16 (T)	5.50	125	10.0
CV10-18 (T)	7.50	144	10.0
CV10-20 (T)	7.50	160	10.0
CV10-22 (T)	7.50	178	10.0

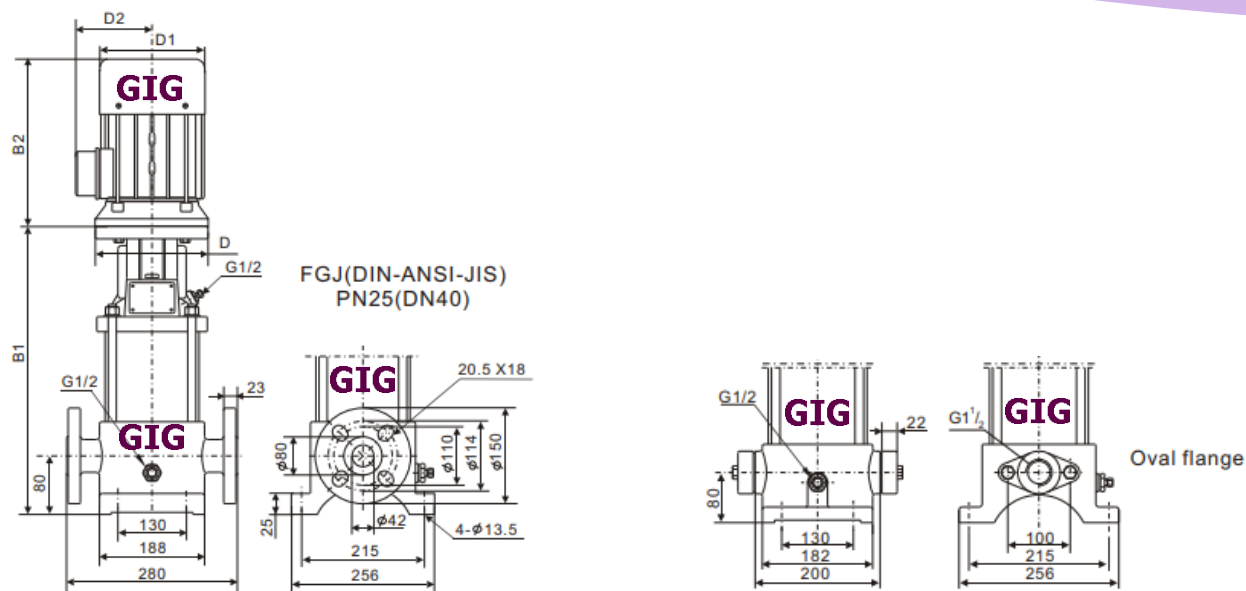
T = Voltage (Frequency) : 220V (50Hz)

CV10 - Series

Stainless Steel – Vertical Multistage Centrifugal Pump

GIG

Overall Dimension



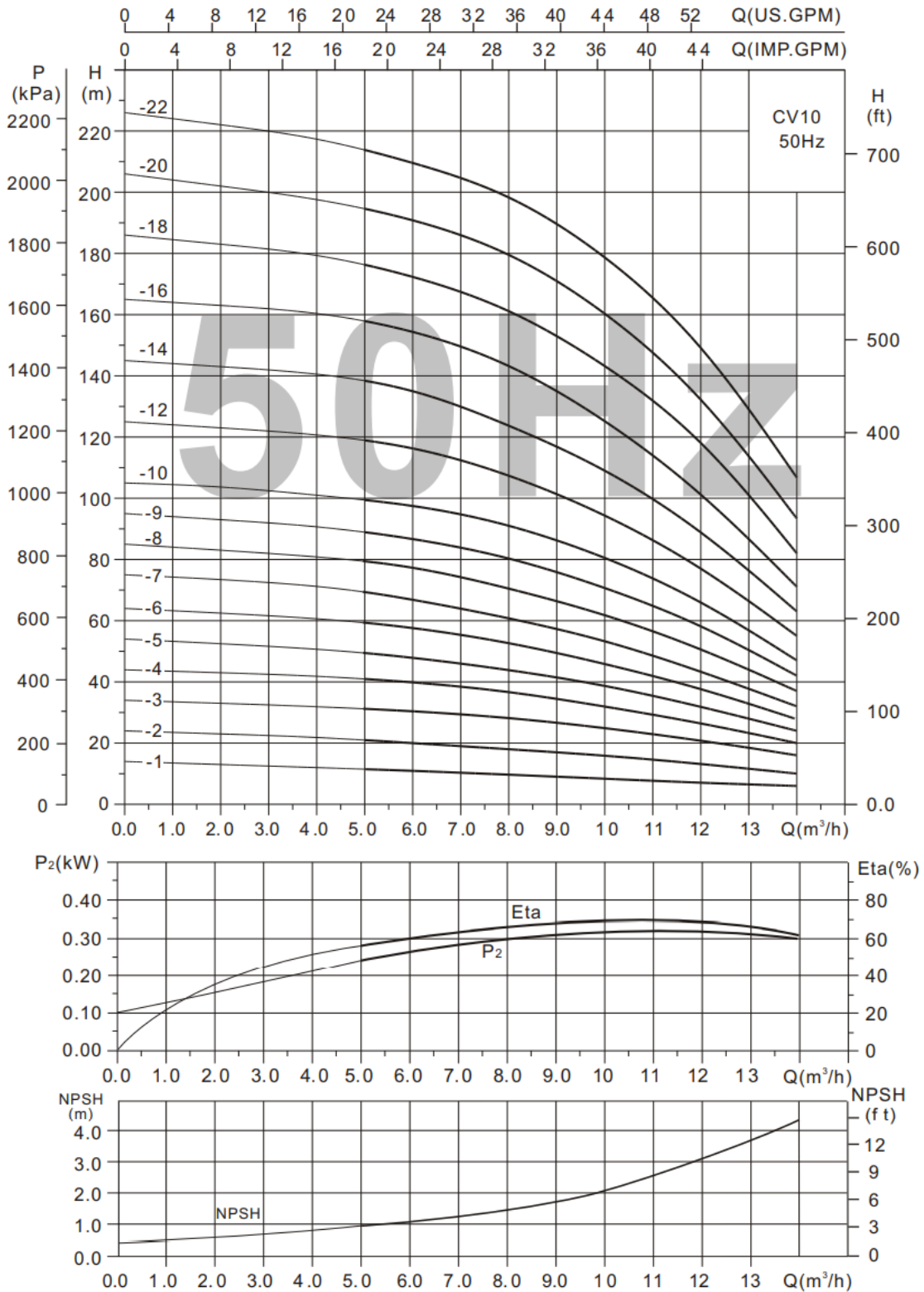
Model	Dimension (mm)						Weight (kg)
	B1	B2	B1+B2	D	D1	D2	
CV10-2 (T)	352	205	557	0	133	102	40
CV10-4 (T)	418	659/711	659/711	0	154	111	50
CV10-6 (T)	486	776/779	761/779	0	177	116	55
CV10-7 (T)	516	293	791	0	177	116	60
CV10-8 (T)	546	293	818	0	177	116	61
CV10-9 (T)	576	293	848	0	177	116	63
CV10-10 (T)	626	305	931	0	197	148	65
CV10-12 (T)	686	305	991	0	197	148	68
CV10-14 (T)	761	390	1151	300	275	210	98
CV10-16 (T)	821	390	1211	300	275	210	100
CV10-18 (T)	881	390	1271	300	275	210	125
CV10-20 (T)	941	390	1331	300	275	210	128
CV10-22 (T)	1001	390	1361	300	275	210	130

CV10 - Series

Stainless Steel – Vertical Multistage Centrifugal Pump

GIG

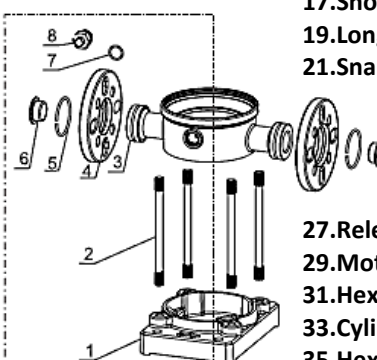
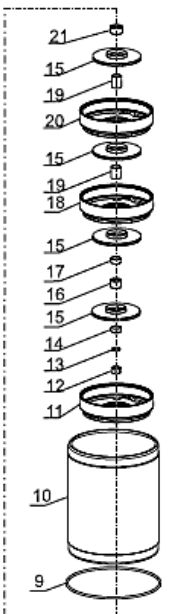
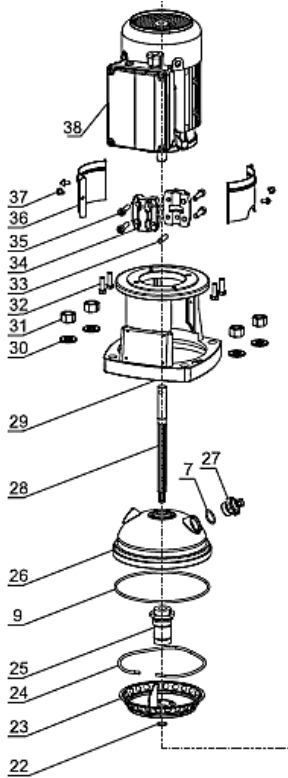
Performance Curve



CV10 - Series

Stainless Steel – Vertical Multistage Centrifugal Pump

GIG



- 1.Base
- 2.Two-Head Bolt
- 3.Pump Body
- 4.Flange
- 5.Flange Ring
- 6.Dust Cap
- 7.O-Ring
- 8.Drain Valve Assembly
- 9.O-Ring
- 10.Housing
- 11.Inlet Section
- 12.Locked Nut
- 13.Spring Washer
- 14.Impeller Fix Ring
- 15.Impeller
- 16.Bearing Sleeve
- 17.Short Sleeve
- 18.Diffusor With Bearing
- 19.Long Sleeve
- 20.Diffusor
- 21.Snap-Ring Seat
- 22.Snap-Ring
- 23.Outlet Section
- 24.Elastic Ring
- 25.Mechanical Seal
- 26.Pump Cover
- 27.Release Valve
- 28.Pump Shaft
- 29.Motor Base
- 30.Washer
- 31.Hexagonal Nut
- 32.Hexagonal Bolt
- 33.Cylindrical Pin
- 34.Coupling
- 35.Hexagon Socket Head Cap Screw and Wash Assemblies
- 36.Protective Cover
- 37.Cross Recessed Pan Head Screw and Wash Assemblies
- 38. O-Ring

Type Keys

